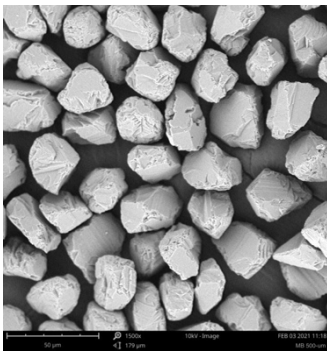




**Metal Bond - Micron**

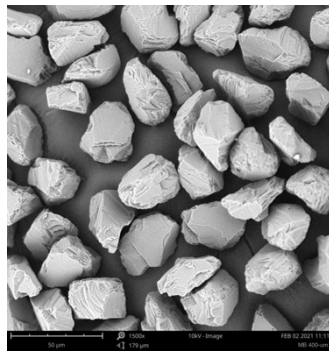
Thanks to their superior metal bond retention, resistance to disintegration at very high temperatures and added strength, EID Metal bond Synthetic Diamond Powders are ideal for the most sensitive lapping and finishing applications. A variety of cutting edges, high particle strength and a blocky cubo-octahedral shape also make EID Metal bond Synthetic Diamond Powders ideal for grinding glass tungsten carbide and surfacing stones. Synthetically created under high pressure and temperature conditions, EID Metal bond Synthetic Diamond Powder is known as the product that reaches far beyond state-of-the-art status.

**MB 500 um**  
(Premium Plus)



Our highest level of milled blocky shape & extra tight curve grading, where sensitive controlled engineering is desired.

**MB 400 um**  
(Premium)



Premium milled shape & tight grading for the more stringent engineered applications.

**MB 300 um**  
(Standard)



Standard milled consistent shape & grading, suitable for most standard applications.

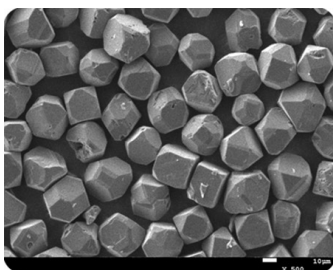
**MB 200 um**  
(Economy)



Economy milled shape & wide range grading where price is the driving factor.

**EGM**

(As Grown Micron)



Unlike other micron powders, a crushing process is not required in the production of EGM. Consequently, the internal toughness of the diamond particle is unharmed, allowing it to sustain its complete crystal structure and features such as high wear resistancy, thermal stability and a longer tool life. Sizes – EGM is available in 40/60 um down to 15/25 um.

**SIZE CHART**

Metal Bond - Micron (MB 200-300-400-500)					
0-0.20	✓	1-3	✓	10-20	✓
0-0.25	✓	2-4	✓	12-22	✓
0-0.50	✓	3-5	✓	15-25	✓
0.25-0.75	✓	3-6	✓	20-30	✓
0-1	✓	4-6	✓	20-40	✓
0.50-1	✓	4-8	✓	30-40	✓
0.50-1.5	✓	5-10	✓	30-50	✓
0.75-1.25	✓	6-12	✓	40-50	✓
0-2	✓	8-12	✓	40-60	✓
1-2	✓	8-16	✓		